

# TI METER PEHTLAIHNAK

## ZOHKHENHNAK LE REMHNAK LAM HMUHSAKNAK



Na ti meter zohkhenhnak silole remhnak tuah na herh tik ah, hi lam hmuhsaknak nih hin ttuanvo ngeimi phu pawl, ruahnak peknak pawl le na remhnak caah a herhmi pawl an bawmh lai.



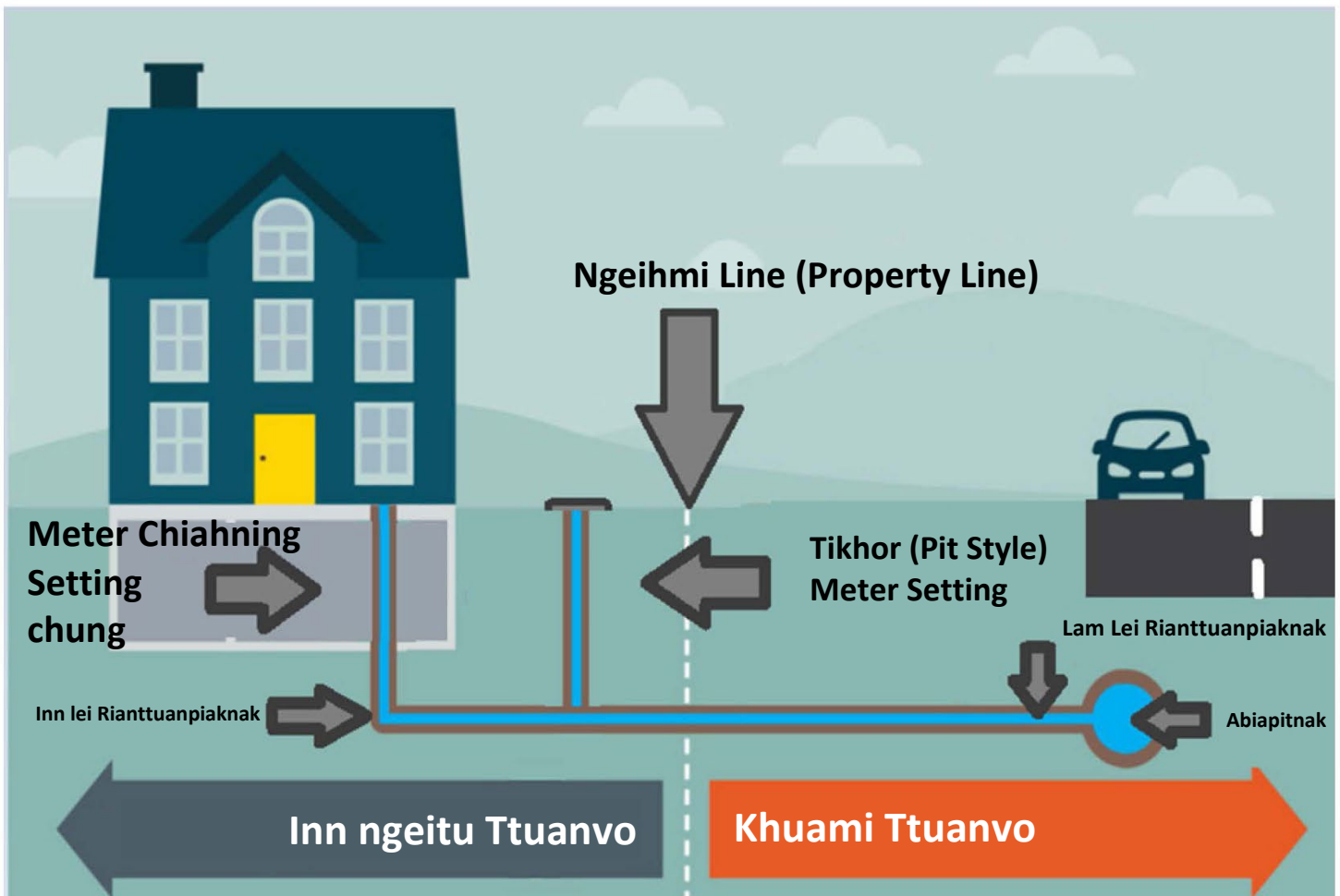
# Ttuanvo pawl

## A HMANGTU:

- Ti khor meter, ti khor a chin, meter schiah ning setting le a dang thilri vial te phihnak le pipeline telh in zohkhenhnak.
- Ti rianttuannak line ii a thluan ning in zohkhenh.
- A kalnak lam (customer hmunhma chung) leng ah a zutmi vialte cu laisen a ngeimi le a thiammi tidong sertu nih customer tangka peknak in a remh lai.
- A kalnak lam (customer hmunhma a silo mi) chung ah a zutmit vialte cu hmanding tangka in Citizens Energy Group (Khuami) nih a remh lai.

## KHUAMI THAZAANG LEI PHU (CITIZENS ENERGY GROUP):

- Ti meter cun a mah he aa pehtlaimi lamhlat (remote) relnak thilri(pawl) zohkhenhnak, hmanding ah chiahnak le laaknak an tuah.
- Ti rianttuanpiaknak rawntthannak silole phihnak an tuah.
- Ttuanvo khiahnak ding ah a zutmi hmun rianttuanpiaknak pawl peknak le hruainak an tuah.
- A tharmi tilu rianttuanpiaknak le rianttuanpiaknak line pawl zohfelnak an tuah.



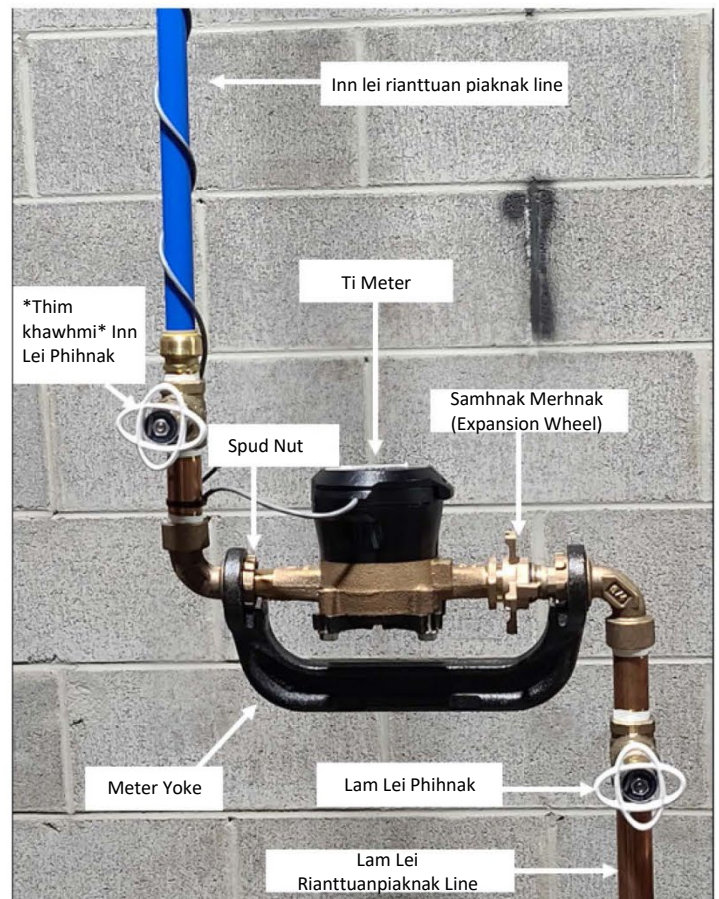
Hmuhsaknak 1: Ti Rianttuanpiaknak Ttuanvo

# Zeitindah Nangmah Te'n Remhnak Na Tuah Lai

## METER PEHTLAIHNAK CHUNG AH REMHNAK TUAHNAK (HMHSAKNAK A)

1. Meter chung ummi khamnak le hmurthur (S/W) hranhnak kha phit. *Theihternak: S/W phihnak cu remh a hauh ahcun, a biapitnak le S/W phihnak kar ah meter silole S/W phihnak a um lo ahcun, lam cung ah ti phih ding ah (317) 927-6000 in Citizens Dispatch chawn hna.*
2. Meter tum ter nak ah ti meter cung ii a pummi kha merh; meter kha pehtlaihna in la law a kam ah chia. Cun, meter pehtlaihna he a banh tertu khaihriat gasket zong kha la. Gasket pawl cu an nem le nemlo silole an that rih le that lo zohfel hna. A ro silole a kah a si ahcun, zaangfahnak te'n airolnak tuah ding ah (317) 927-6000 in Citizens Dispatch kha chawn hna.
3. S/W phihnak airol ding ah, phihnak le 90-degree kiu hmanmi pipe pahnih kar ii S/W phihnak le pipe a tawimi (nipple) kha laa hna. S/W phihnak le nipple pipe kha an pahnih caah airolnak tuah ding le remh ding ah laa hrim hna. *Theihternak: A thar S/W phihnak le nipple pipe ii an tawisau kha a hlun S/W phihnak le nipple pipe ii an tawisau he aa khah ding a biapi tuk. S/W phihnak a thar tam deuh cu an tawi deuh, cun a sau deuhmi nipple pipe hmang in i hlatnak tuah a hau lai.*
4. A dang meter pehtlaihna airol ding ah, remh a herhmi kaa zawn na laak hlaan hranhnak/spud nut kha phoih law meter pehtlaihna kha chat chung. *Theihternak: A cheu meter pehtlaihna pawl nih meter pehtlaihna sin yoke tlaih ding ah lock/spud nut pawl an hmang lo. Hi bantu meter pehtlaihna phun pawl nih riantuanna line cung ah S/W tang a simi fonhnak(union) pipe an ngeih (a nganmi piece pahnih nut). Mah pehtlaihna phun phoihna, remhnak silole airolnak tuah a haumi kha fonhnak nut in phoih sawh lawng a si.*
5. Meter pehtlaihna ah airolnak tuah a haumi na ngeih tik ah, mah kaa zawn airol a haumi kha tipipe hmanmi zuarnak silole thilri (hardware) dawr ah i put. Airolnak na tuahmi le pipe a hmetngan le a tawisau aa khat ding zohfel. Tipipe remhnak le pipe pawl cu fawi te'n ngerhngawih a ngahmi an si lo caah a thar na tuahmi le a hlun kha an hmetngan le an tawisau aa khah hrim a hau.
6. Meter pehtlaihna tuah than ding ah, meter pehtlaihna kha chah a si ning he aa ralkah in tuah law nun ter than. A cang khomi zuhnak pawl hrial ding ah a pemmi pipe cung ah (**din khawhmi ti caah fehtermi**) pipe tape silole pipe banhnak kha hmang.

7. Meter pehtlaihna ii hranhnak/spud nut pawl chung gaskets install tuah. Meter chung ii fei lam hmuhsaknak nih ti kalnak lam lei meter in a hmuhsak ding tha te'n tuah. Cun tii kha S/W phihnak lei ah merh silole lam lei ah ti merh ding ah Citizens kha chawn hna. A zutmi vialte caah remhnak zohfel. *Theihternak: Gaskets an chiat ah ahcun, Citizens Energy Group kha (317) 924-3311 ah chawn hna. Seh lei thiamnak ngeimi a rak ra lai ii gasket thar an tuah piak lai cun nangmah caah ti meter kha a thar in an tuah piak lai.*
8. Meter hmai ah pemnak (shark bites), STAB fittings, PEX, POLY, PVC, silole plastic onh hna hlah.
9. Riantuanpiaknak line silole pehtlaihna tharchuah a si caan ah, meter hmai ah seinam (yoke bar) le phihnak he Citizens Water Standards a si awk a si.

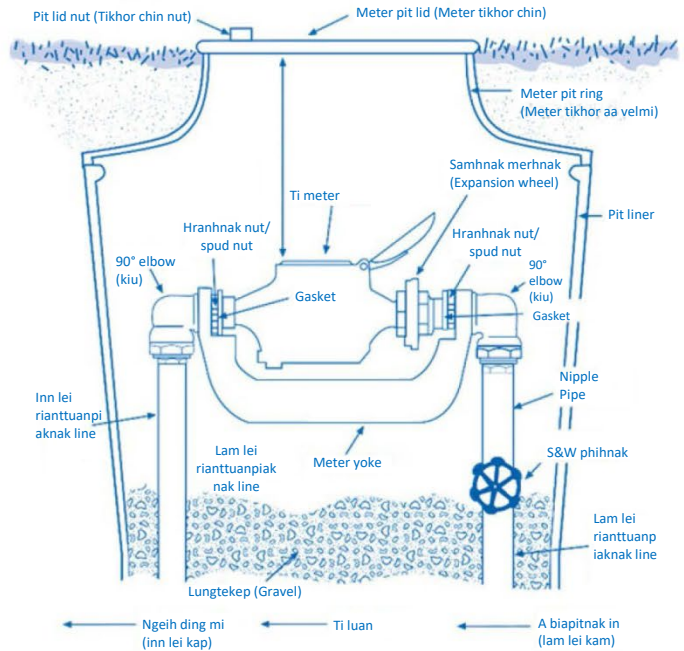


Hmuhsaknak A: Ti Meter Setting Chung

# Zeitindah Nangmah Te'n Remhnak Na Tuah Lai

## STYLE HLUN VAWLEI TANG METER PEHTLAIHNAK REMHNAK (HMUHSAKNAK B)

1. Meter hmai khamnak le hmunthur (S/W) phihnak kha phit. *Theihternak: Meter hmai ah S/W a um lo ahcun silole S/W phihnak airol a hauh ahcun, ti lam lei ah phih ding ah (317) 924-331 in Citizens chawn hna.*
2. Meter tikhor ring hnu lei ah lid chia law meter thikhor ring a khuptu nawncek pawl laaknak in meter tikhor kha cok. Ring pawng hrawng lid in latmah 6 cok law meter pit ring ii a chin na on tiang cok. Mah na dih tik ah, meter pit ring kha cawi law meter pit ah rian na tuan ding hmunhma i pe.
3. Ti meter phawih ding ah samhnak merhnak kha ong; meter kha pehtlaihna in thawn law a kam ah chia. Pehtlaihna ah meter a banhtu khaihriat gasket pawl zong kha thawn. Gasket pawl cu an nem le nemlo silole an that rih le that lo zohfel hna. A ro silole a kah a si ahcun, zaangfahnak te'n airolnak tuah ding ah (317) 924-3311 in Citizens kha chawn hna.
4. S/W phihnak airol ding ah, phihnak le 90-degree kiu hmanmi pipe pahnih kar ii S/W phihnak le pipe a tawimi (nipple) kha laa hna. S/W phihnak le nipple pipe kha an pahnih caah airolnak tuah ding le remh ding ah laa hrim hna. *Theihternak: A thar S/W phihnak le nipple pipe ii an tawisau kha a hlun S/W phihnak le nipple pipe ii an tawisau he aa khah ding a biapi tuk. S/W phihnak a thar tam deuh cu an tawi deuh, cun a sau deuhmi nipple pipe hmang in i hlatnak tuah a hau lai.*
5. A dang meter pehtlaihna airol ding ah, remh a herhmi kaa zawn na laak hlaan lock/spud nut kha phoih law meter pehtlaihna kha chat chung. *Theihternak: A cheu meter pehtlaihna pawl nih meter pehtlaihna sin yoke tlaih ding ah lock/spud nut pawl an hmang lo. Hi bantu meter pehtlaihna phun pawl nih rianttuannak line cung ah S/W tang a simi fonhnak pipe an ngeih (a nganmi piece pahnih nut). Mah pehtlaihna phun phoihna, remhnak silole airolnak tuah a haumi kha fonhnak nut in phoih sawh lawng a si.*
6. Meter pehtlaihna in a rawkmi na laak dih tik ah, mah kaa zawn kha tipipe hmanmi zuarnak silole thilri dawr ah i put. Airolnak na tuahmi le pipe a hmetngan le a tawisau aa khat ding zohfel. Tipipe remhnak le pipe pawl cu fawi te'n ngerhngawih a ngahmi an si lo caah a thar na tuahmi le a hlun kha an hmetngan le an tawisau aa khat hrim a hau.



Hmuhsaknak B: Meter Setting Leng (Style Hlun)

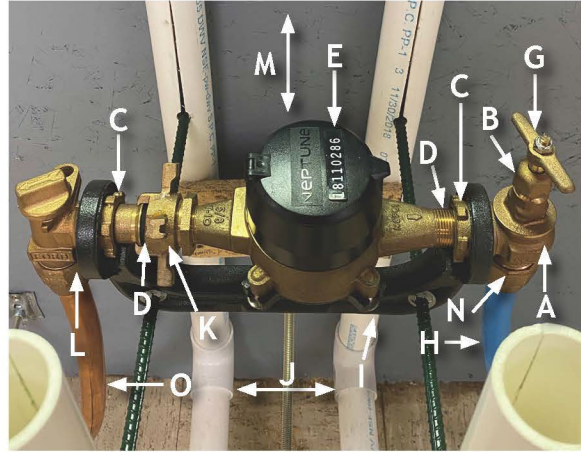
7. Meter pehtlaihna tuah than ding ah, meter pehtlaihna kha chah a si ning he aa ralkah in tuah law nun ter than. A cang khomi zuhnak pawl hrial ding ah a pemmi pipe cung ah (din khawhmi ti caahfehtermi) pipe tape silole pipe banhnak kha hmang.
8. Meter pehtlaihna ii hranhnak/spud nut pawl chung gaskets install tuah. Meter chung ii fei lam hmuhsaknak nih ti kalnak lam lei meter in a hmuhsak ding tha te'n tuah. Cun ti kha S/W phihnak ah ong silole lam lei ah ti on a si nak hnga le a zutmi vialte caah zohfelna tuah ding ah (317) 924-3311 in Citizens kha chawn hna.
9. Citizens Water Standards phak ding ah meter pit ring kha airolnak tuah.
10. Meter pit chung ah pemnak (shark bites) silole STAB hranhnak cu onh an si lo. Meter pit chung ah PEX silole PVC piping onh an si lo. Inn lei meter lawng ah poly thilri pawl onh a si.

# Zeitindah Nangmah Te'n Remhnak Na Tuah Lai

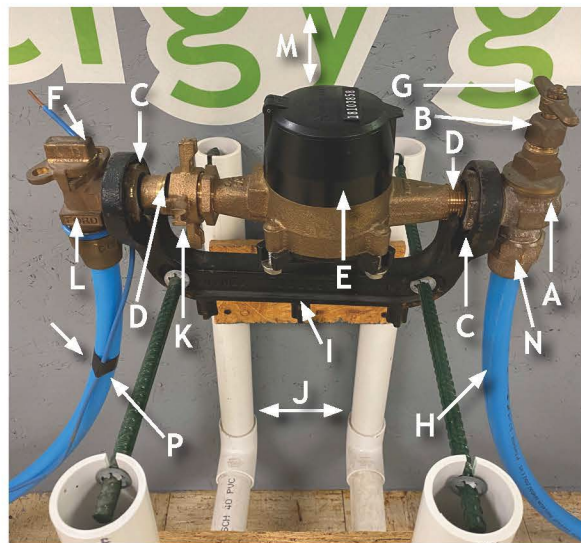
## STYLE THAR VAWLEI TANG METER PEHTLAIHNAK REMHNAK (HMHSAKNAK C-1 LE C-2)

1. Meter pehtlaihnaak silole pipe pawl ah rianttuan na thok hlaan ah ti phit ta zungzal. Mah ti tuahnak ding ah, a kam phitnak ah ti kha phit. Fei cu Meter he a hlat nak a phak hlaan lo le a awng pahnih an i fonh hlaan lo fei in ong.
2. Meter tikhor ring hnu lei ah lid chia law meter thikhor ring a khuptu nawncek pawl laaknak in meter tikhor kha cok. Ring pawng hrawng lid in latmah 6 cok law meter pit ring ii a chin na on tiang cok. Mah a dih tik ah, meter pit ring kha cawi law meter pit rianttuannak ah hmunhma i pe.
3. *Theihternak: Mah bantuk meter pehtlaihnaak hnu lei ah a ummi pawng lawng hi a ngeitu nih remh khawh a si.* A kam phihnak hnu ah flare nut silole a kam phihnak remh a hauh ahcun, a thiammi pipe sertu kha chawn.
4. Meter tum ter nak ah ti meter cung ii a pummi kha merh; meter kha pehtlaihnaak in la law a kam ah chia. Pehtlaihnaak ah meter a banhtu khaihriat gasket pawl zong kha thawn. Gasket pawl cu an nem le nemlo silole an that rih le that lo zohfel hna. A ro silole a kah a si ahcun, zaangfahnak te'n airolnak tuah ding ah (317) 924-3311 in Citizens kha chawn hna.
5. Hranhnak/spud nuts pawl kha thawn hna cun meter pehtlaihnaak kha a herhmi airolnak thawn a si hlaan tiang laa chung hna.
6. Meter pehtlaihnaak in a rawkmi na laak dih tik ah, mah kaa zawn kha tipipe hmanmi zuarnak silole thilri dawr ah i put. Airolnak na tuahmi le pipe a hmetngan le a tawisau aa khat ding zohfel. Tipipe remhnak le pipe pawl cu fawi te'n ngerhngawih a ngahmi an si lo caah a thar na tuahmi le a hlun kha an hmetngan le an tawisau aa khah hrim a hau.
7. Meter pehtlaihnaak tuah than ding ah, meter pehtlaihnaak kha chah a si ning he aa ralkah in tuah law nun ter than. A cang khomi zuhnak pawl hrial ding ah a pemmi pipe cung ah (din khawhmi ti caahfehtermi) pipe tape silole pipe banhnak kha hmang.
8. Meter pehtlaihnaak ii hranhnak/spud nut pawl chung gaskets install tuah. Meter chung ii fei lam hmuhsaknak nih ti kalnak lam lei meter in a hmuhsak ding tha te'n tuah. Cun tii kha phihnak lei ah merh law a zut mi um le um lo tha tein in zoh.

9. Citizens Water Standards phak ding ah meter pit ring kha airolnak tuah.
10. Meter pit chung ah pemnak (shark bites) silole STAB hranhnak cu onh an si lo. Meter pit chung ah PEX silole PVC piping onh an si lo. Inn lei meter lawng ah poly thilri pawl onh a si.



Hmuhsaknak C-1: Meter Setting Leng (Style Thar)



Hmuhsaknak C-2: Meter Setting Leng (Style Thar)

### Hmuhsaknak C-1 le Hmuhsaknak C-2 caah A Phi:

- |   |   |
|---|---|
| A- Khamnak le Hmunthur (S&W) Phihnak        | L- Flare Nut  |
| B- Packing Nut (Nut Funmi)                  | M- 16" - 18"  |
| C- Hranhnak Nut/Spud Nut                    | (Meter in Meter Tikhor Hranhnak Chin thianhnak)                             |
| D- Gasket                                   | N- Flare Nut SILOLE meter thar pawl ca lawng ah Huap in Ropternak           |
| E- Ti Meter (Citizens Energy Phu nih pekmi) |   |
| F- Angle Valve (A Kam lei Phihnak)          | <b>Hmuhsaknak C-1 ca LAWNG ah:</b>  |
| G- S&W Valve Handle (Phihnak Tolrelnak)     | O- Lam lei Rianttuanpiaknak Line (Copper Line "K" Phun)                     |
| H- Inn lei Rianttuanpiaknak (Polyethylene)  | <b>Hmuhsaknak C-2 ca LAWNG ah:</b>  |
| I- Meter Yoke (Beinak)                      | P- Lam lei Rianttuanpiaknak Line (Polyethylene le Tracer Wire telh hrimnak) |
| J- EZ Insert (Sanhnak)                      | Q- Tracer Wire (Hnuzulhnak Wire)  |
| K- Expansion Wheel (Samhmi Merhnak)         |   |

# A NINGCANGLO MI DIRHMUN CAAH TI RIANTUANPIAKNAK LAMHMUHSAKNAK

## A CANG TAWNMI NINGCANGLO DIRHMUN PAWL CU:

- A rawkmi ti meter pit ring.
- A sangmi silole a niamey ti meter pit in sanhnak tiang.
- A hmanthu hmunhma ah ti meter a hnu silole a hmai zuhnak.
- A rawkmi S/W (Kham le Hmunthur) silole Angle Valve (A Kam Pihnnak).
- Meter pit chung ah PEX silole PVC thilri chiahnak.

Aa ningcanglo mi sining remhnak ding ah, a hmanthu hna nih a pia muici tag chung ah theihternak tialmi ningcanglo sining remh ding ah laisen a ngeimi le a thiammi tipipe remhtu an hlaan hrim lai.

Remhnak a dih tik ah, a hmanthu nih Citizens Water Standard he aa tlak in remhnak an tuah nak aa tialmi a pia muici tag kha mail in an kuat than hrim lai. Zaangfahnak te'n hi rianttuanpiaknak tag ii copy kha khumhmi (record) i chiahnak ah i fim.

Ningcang lo sining nih a hmanthu caan chikhat ti ngah lo nak a chuah ter ahcun, zaangfahnak te'n 317-927-6000 ah na rianttuanpiaknak pawl ngah than ding ah pehtlaihna tuah. Pekmi caan chung ah a herhmi remhnak a hmanthu nih a tlin khawh lo ahcun, zaangfahnak te'n Citizens' Customer Service 317-924-3311 ah pehtlaihna tuah.



# A NINGCANGLO MI DIRHMUN CAAH TI RIANTUANPIAKNAK LAMHMUHSAKNAK

Ti rianttuanpiaknak soknak ca cu tipipe sernak lei thiamnak a ngeimi nih rianttuanpiaknak thar pakhat cio cohlaan ding ah soknak a tuah hrim lai (ramchung<sup>1,2</sup>, Say-myaung<sup>3</sup> (irrigation), le mei<sup>4</sup>). Nawl onhnak ca cu rianttuanpiaknak line pakhat cio ii remhnak, airolnak le installnak tuah hlaan ah ngah hrim a hau. Rianttuanpiaknak line cung ah tuanmi rian vialte cu a thiammi tipipe sertu nih a tuah dih lai ii zohfelnak tuah ding ah chiah a si lai.

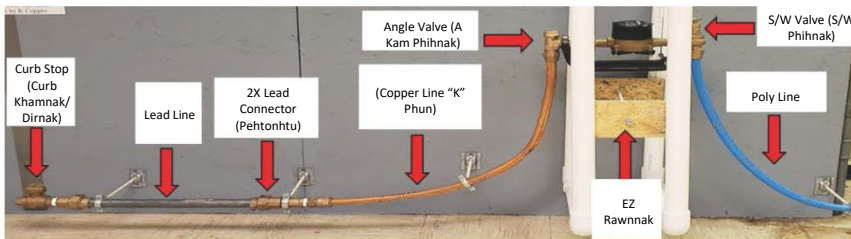
Citizen ii zohfelnak tuah lio ah, meter cu rianttuanpiaknak line tap violate ah chiah a si lai.<sup>5,6</sup> A biapimi in meter pit tiang rianttuanpiaknak line cu zohfelnak tuah ding caan rikhiahi chung ah zoh a si lai ii tap ser a si hlaan ah Citizens nih cohlaannak a tuah ta lai.

Ti meter setting chung a herhmi sining a leng pit ah chuah a hau mi pawl ah mah hi an i tel:

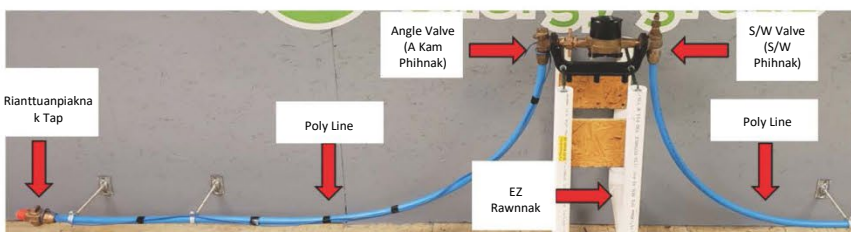
- Ti rianttuanpiaknak line a zutmi cu cawt piak a hau ii latmah 3 nak in a ngan deuhmi pipe in thlen a hau.
- Ti rianttuanpiaknak line a zutmi nih innchung ti liannak silole ti rawhnak a chuah pi.
- Zohfelnak tuah lio mi hmun ah, ti rianttuanpiaknak cu a hme deuhmi silole a nunglomi rianttuanpiaknak line he pehtonh khawh a si lo.

Hmuhsaknak 2 nih ti rianttuanpiaknak kha inntang in tikhor (pit) tiang aa kal lio le a ummi rianttuanpiaknak line he aa peh lio a langh ter.

Hmuhsaknak 3 nih rianttuanpiaknak line a thar install tuahnak caah ti a biapitnak tuk a si lio ti rianttuanpiaknak line aa serning a langh ter.



Hmuhsaknak 2: A Ummo Ti Abiapimi Rap caah Lead Rianttuanpiaknak Line he Ti Rianttuanpiaknak Line aa Sersiamnak



Hmuhsaknak 3: A Thar Ti Abiapimi Tap (New Water Main Tap) le Rianttuanpiaknak Line caah Ti Rianttuanpiaknak Line Sersiamnak

<sup>1</sup> Domestic (Innchung) rianttuanpiaknak nih say-myaung(irrigation) a ngei lomi inn 2,000 square feet (SF) caah rianttuanpiaknak line pipe chung ah latmah ¾ a hmemi diameter a ngeih hrim a hau cun 2,000 SF cung lei silole say-myaung a ngeimi 2,000 SF tang inn pawl caah latmah 1.

<sup>2</sup> Domestic rianttuanpiaknak pakhat cio nih aa dang te'n tap pakhat cio an ngeih hrim lai. Branched rianttuanpiaknak pawl cu cohlaan a si ti lo.

<sup>3</sup> Rianttuanpiaknak pipe chung ah latmah 1 a hmemi diameter say-myaung rianttuanpiaknak nih a ngeih hrim lai.

<sup>4</sup> Rianttuanpiaknak pipe chung ah latmah 2 a hmemi mei (fire) rianttuanpiaknak nih a ngeih hrim lai.

<sup>5</sup> A thar rianttuanpiaknak tap cu aa khatmi khor chung ah a umciami rianttuanpiaknak tap he a tlawm bik pe 3 ah chiah a si hrim lai.

<sup>6</sup> Khamnak kuang (Curb box) le touchpad cu dinh ter an si lai ii laak an si hrim lai.



2020 North Meridian Street  
Indianapolis, IN 46202

## **BIAHALNAK PAWL CAAH PEHTLAI**

**A Hmangtu Rianttuanpiaknak (Khuasami):**

(317) 924-3311

**A Hmangtu Rianttuanpiaknak (Hlaannak le Rian lei):**

(317) 924-3321