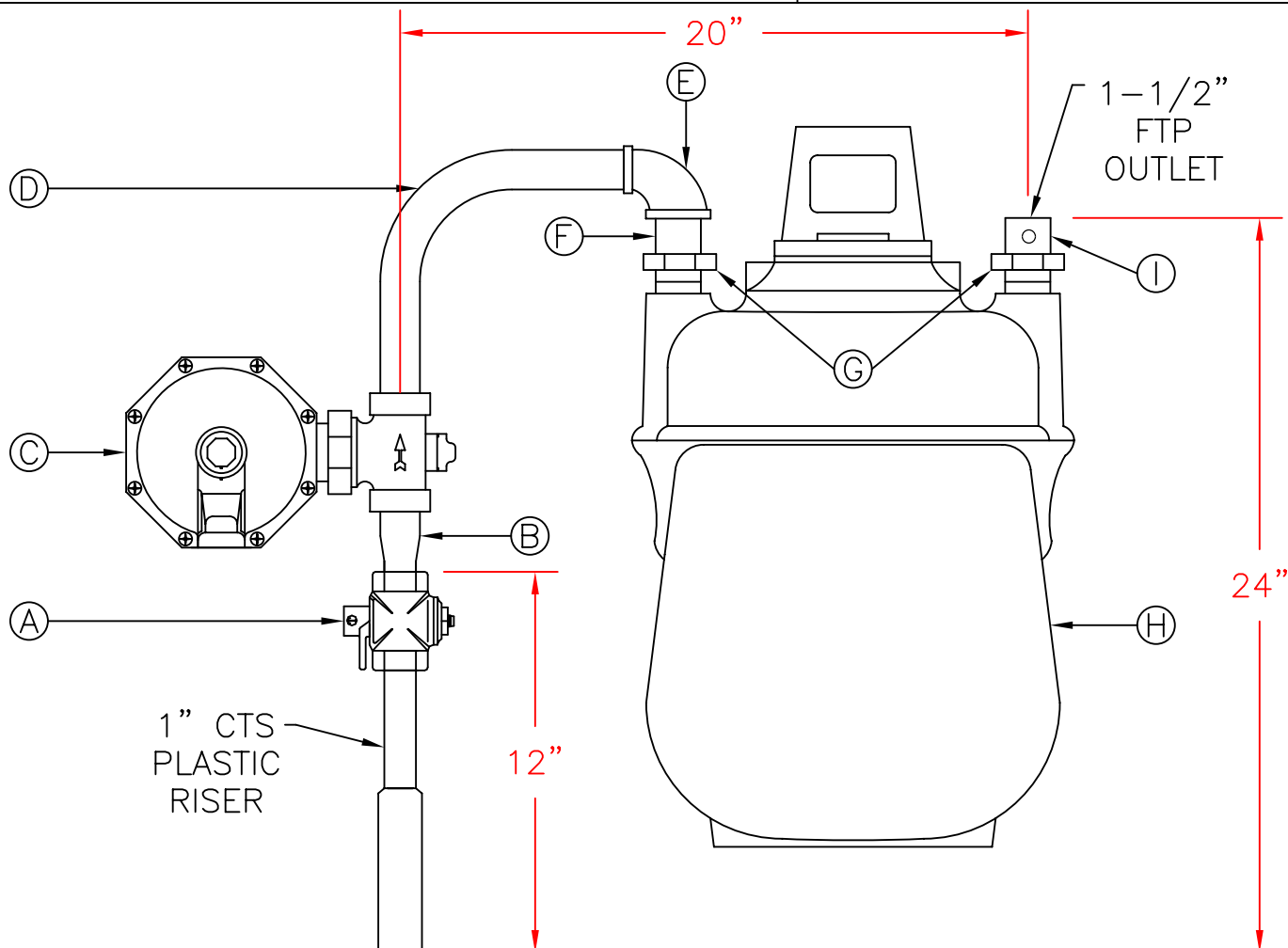


# STANDARD METER SETTING

# 800



## NOTES

\*\*FOR 60 PSIG SYSTEMS USE U-37  
 DISTANCE FROM BUILDING: 12"  
 ALL DIMENSIONS ARE APPROXIMATE  
BILL OF MATERIALS

- A: (1) 3/4" LOCKWING VALVE
- B: (1) 3/4" X 1" SWAGE NIPPLE
- C: (1) U-36 REGULATOR\*\*
- D: (1) 6" X 6" X 1" METER ELL
- E: (1) 1-1/2" X 1" 90° REDUCING ELL
- F: (1) 1-1/2" SWIVEL
- G: (2) METER NUTS
- H: 800 T.C. METER
- I: (1) 1-1/2" INSULATED MOBIUS SWIVEL

HIGH PRESSURE METER SETTING  
 OUTLET PRESSURE: 6" W.C.

DATE: 02/25/09 DWG. BY: M.A.T.  
 DATE: 04/27/02 DWG. BY: R.A.M.  
 DATE: 01/14/97 DWG. BY: K.L.F.  
 APPROVED BY: C.H.P.