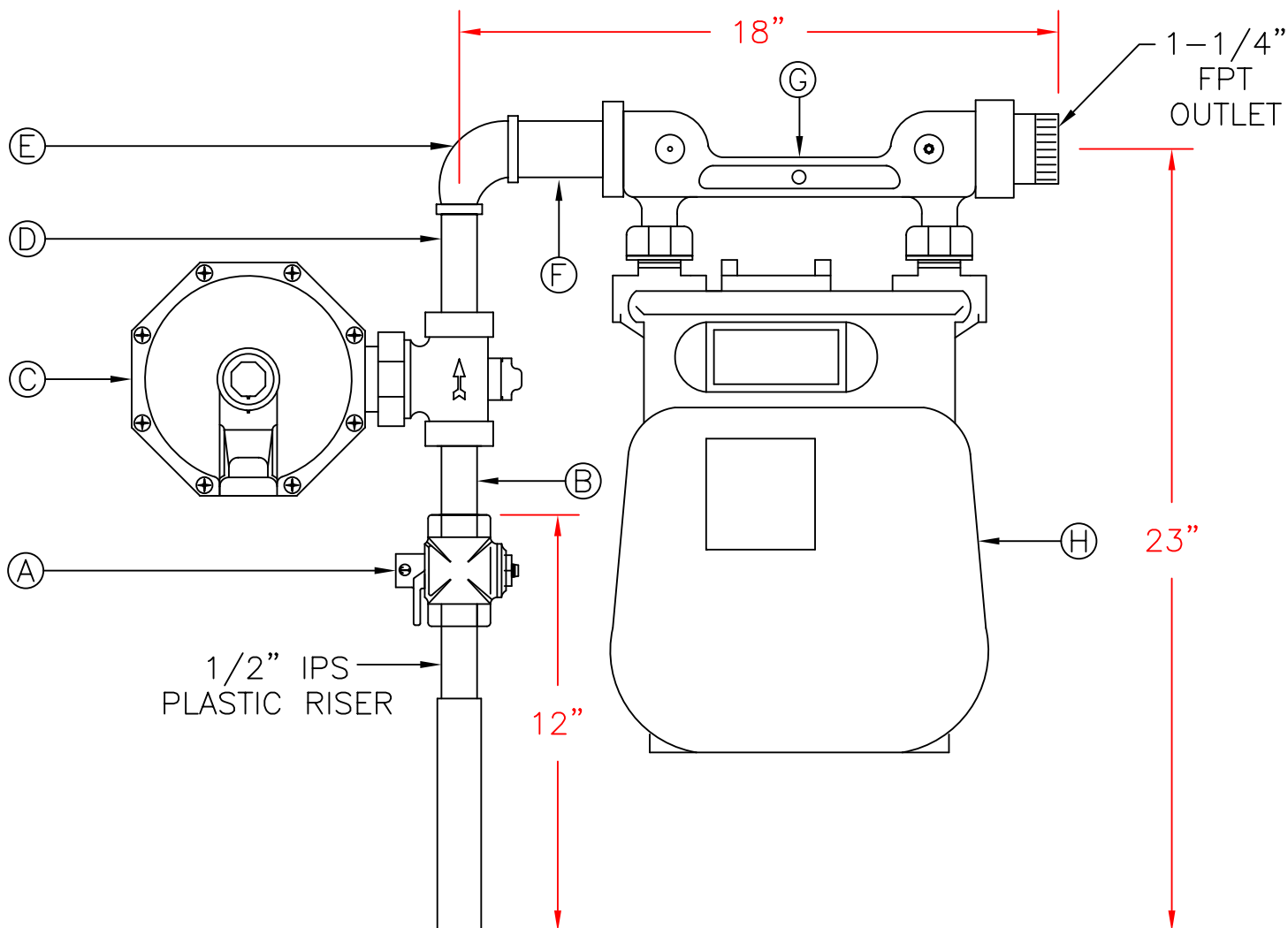


STANDARD METER SETTING

425



NOTES

**FOR 60 PSIG SYSTEM USE UD-21

DISTANCE FROM BUILDING: 12"

ALL DIMENSIONS ARE APPROXIMATE

BILL OF MATERIALS

- A: (1) 3/4" LOCKWING VALVE
- B: (1) 3/4" X 2" NIPPLE
- C: (1) UD-20 REGULATOR**
- D: (1) 3/4" X 3" NIPPLE
- E: (1) 1-1/4" X 3/4" 90° REDUCING ELL
- F: (1) 1-1/4" X 3" NIPPLE
- G: (1) INSULATED METER BAR
- H: 425 T.C. METER

HIGH PRESSURE METER SETTING
OUTLET PRESSURE: 6" W.C.

DATE: 02/25/09 DWG. BY: M.A.T.
 DATE: 04/27/02 DWG. BY: R.A.M.
 DATE: 04/18/95 DWG. BY: C.H.P.
 APPROVED BY: M.J.S.